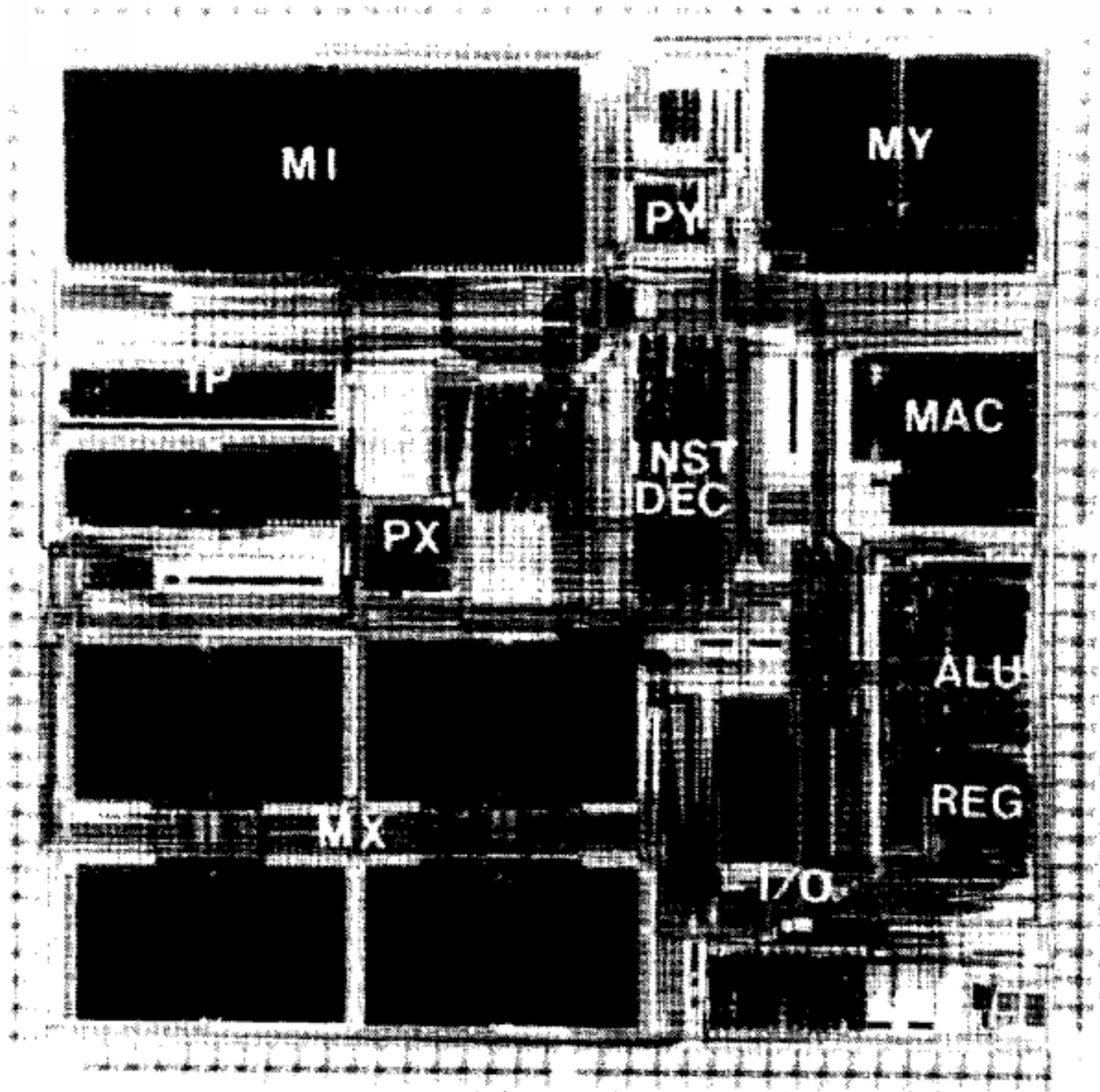


LOW-POWER DSP

ISSCC 1993



A 16B Low-Power-Consumption Digital Signal Processor

THE 1990s WERE marked by an increasing emphasis on reducing the power consumption of integrated circuits. An early example of the trend was shown by Ueda et al. in 1993. The paper describes a 70mW DSP chip intended for use as a speech CODEC in mobile telephony applications.

K. Ueda¹, T. Sugimura¹, M. Okamoto¹, S. Marui¹, T. Ishikawa², M. Sakakihara³

¹ Matsushita Electric Inc. Co., Ltd., Osaka, Japan

² Matsushita Communication Ind. Co., Ltd., Yokohama, Japan

³ Matsushita Electronics Corp., Kyoto, Japan