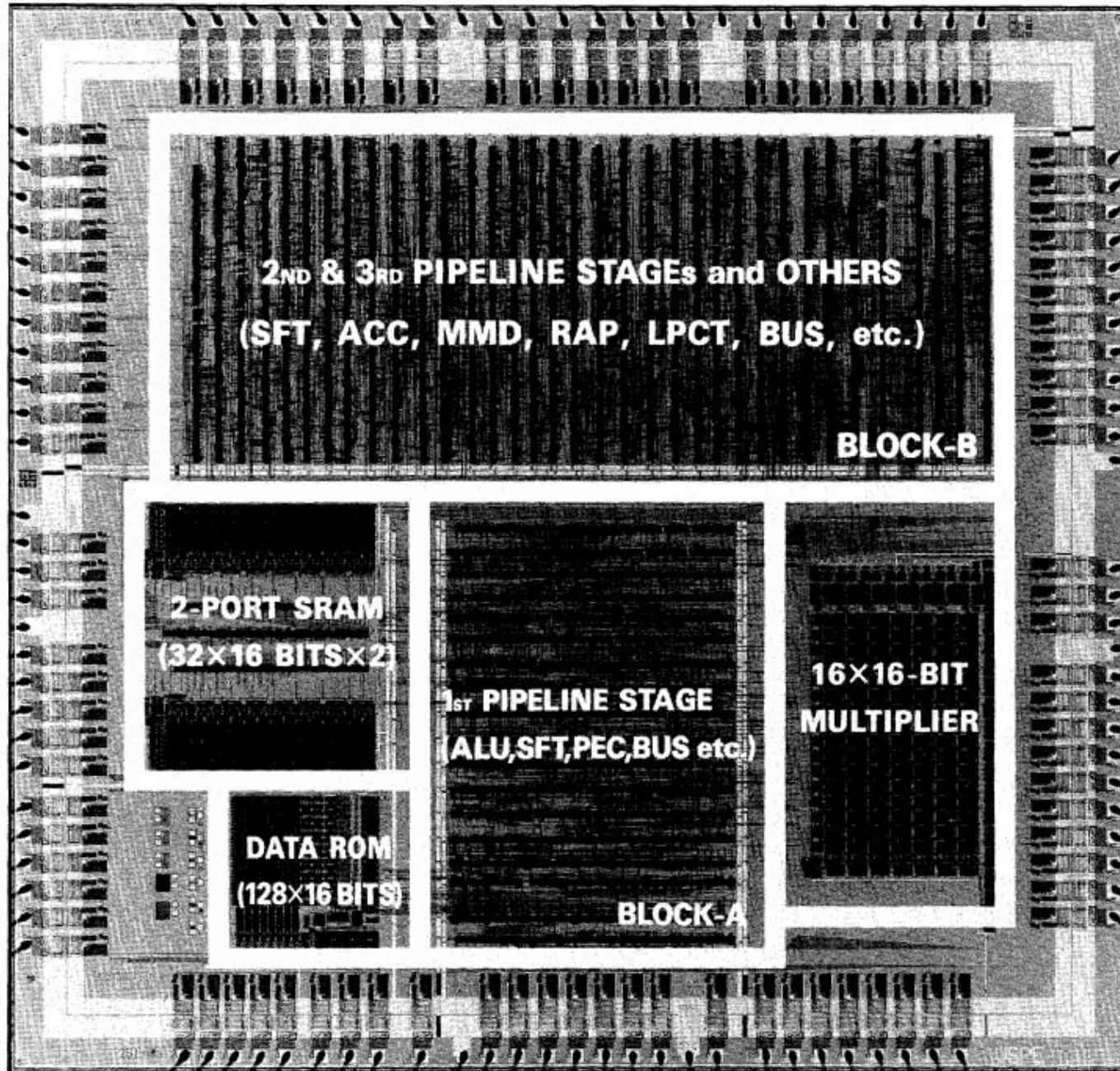


# VIDEO DSP

ISSCC 1987



## A Realtime Microprogrammable Video Signal LSI

IN 1987, THE DSP WAS ADAPTED TO VIDEO SIGNAL PROCESSING, AS DESCRIBED BY Yamashina et al. Truly programmable image and video processing was a new direction for signal processors, with earlier examples of image processing typically being of the hard-wired variety.

**M. Yamashina, T. Enomoto, T. Kunio**

NEC Microelectronics Research Laboratories, Kawasaki, Japan

**I. Tamitani, H. Harasaki, T. Nishitani**

NEC C&C Systems Research Laboratories, Kawasaki, Japan

**M.Sato**

NEC Transmission Division, Kawasaki, Japan

**K. Kikuchi**

NEC System LSI Development Division, Kawasaki, Japan