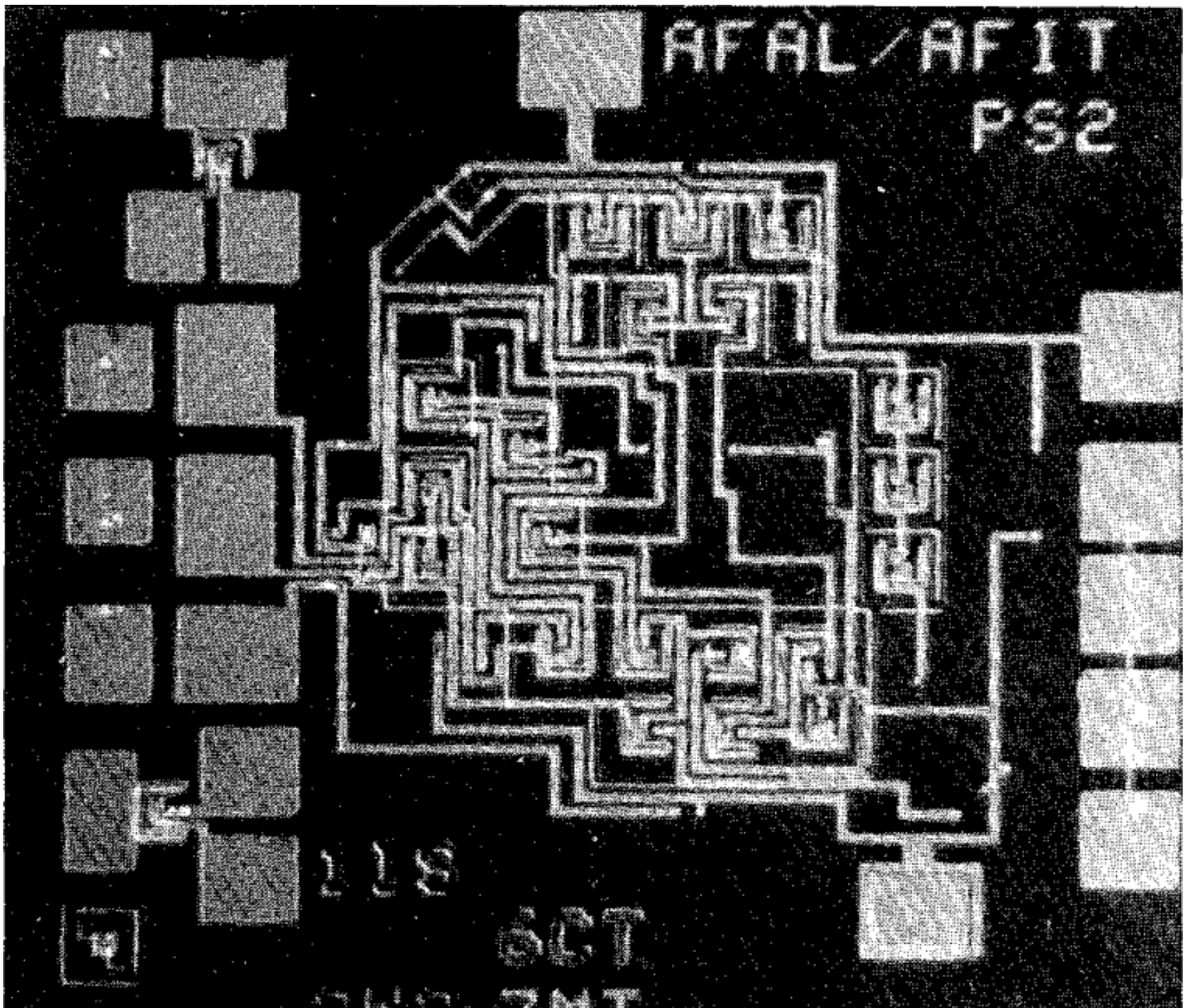


INTEGRATED MICROSENSORS

ISSCC 1979



Integrated Signal Conditioning for Diaphragm Pressure Sensors

EARLY DIAPHRAGM pressure sensors were described by Borky (Air Force Institute of Technology) and Wise (University of Michigan) in 1979. These mechanical sensors were based on the piezoresistive effect in silicon, a basic approach found in a wide range of commercial automotive, industrial, and biomedical microsensors.

J.M. Borky

Air Force Institute of Technology, Wright-Patterson AFB, OH

K.D. Wise

University of Michigan, Ann Arbor, MI