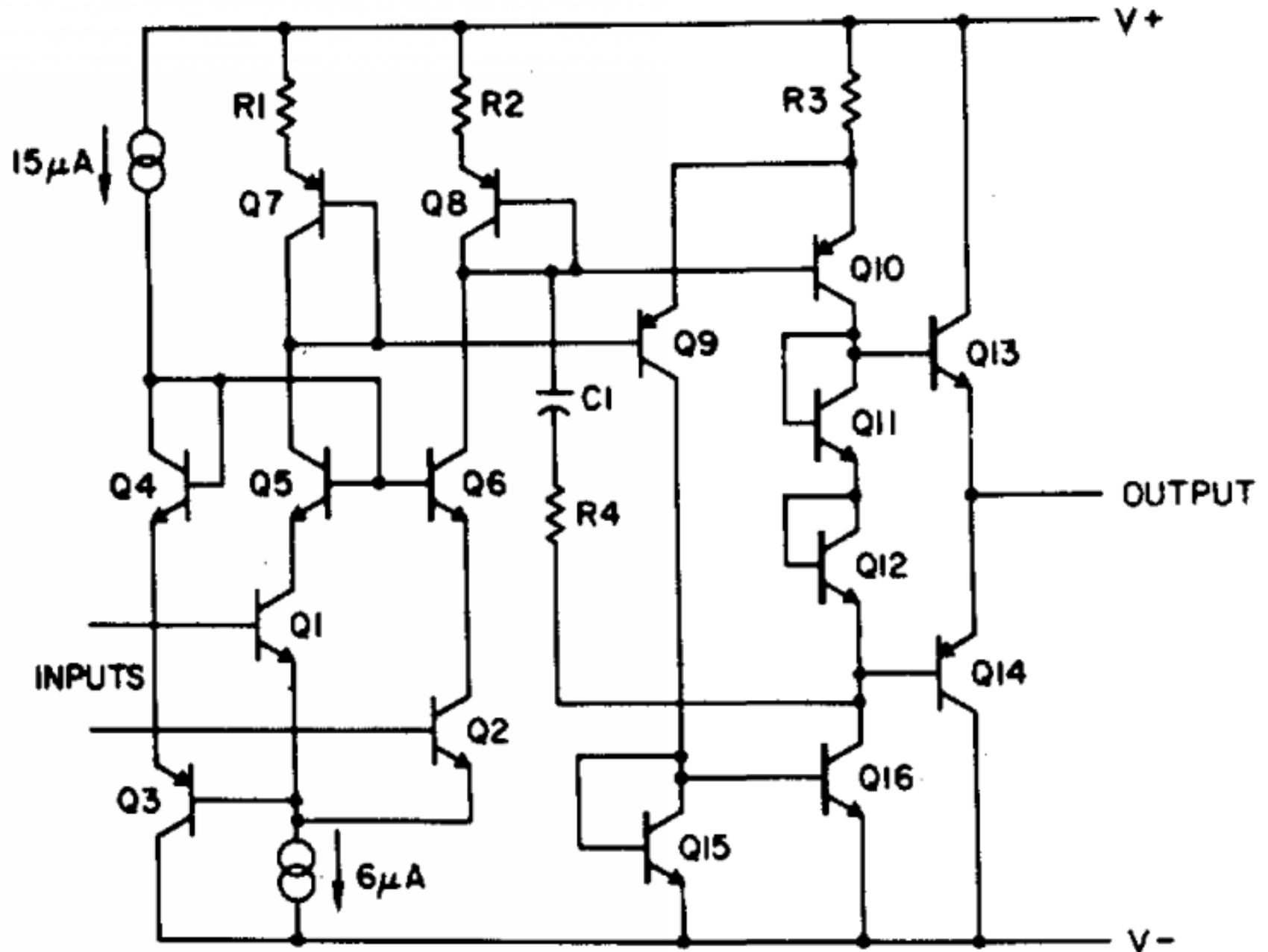


# COMPETITIVE MONOLITHIC OPAMPS

ISSCC 1969



## New Approaches for the Design of Monolithic Operational Amplifiers

ADVANCES IN IC components allow performance enhancements of monolithic opamps. A composite of high gain input devices and high breakdown cascode devices is used to implement an opamp with 100pA input offset current. A high speed opamp implements a signal path without pnp transistors. A bandwidth of 50MHz is achieved using source follower and resistor based level shifter.

R.J. Widlar

National Semiconductor Corp., Santa Clara, CA